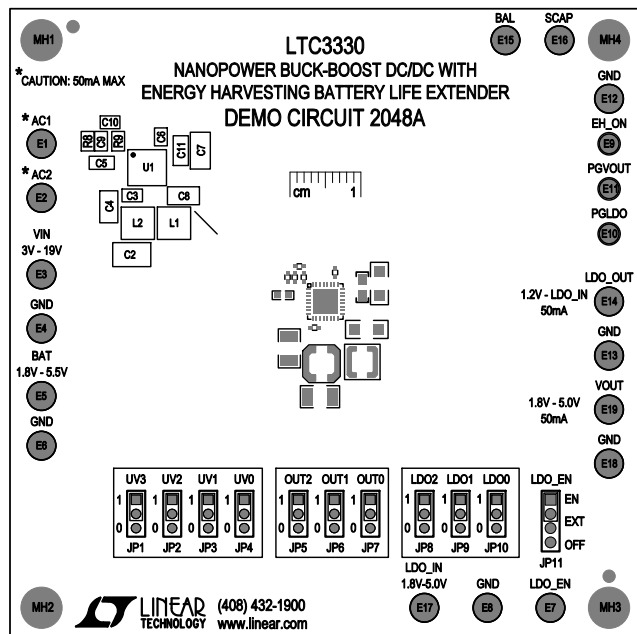
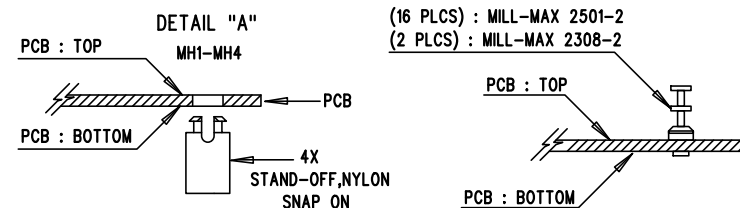


| REVISION HISTORY | | | | |
|------------------|-----|----------------|------|---------|
| ECO | REV | DESCRIPTION | APPR | DATE |
| - | 3 | PRODUCTION FAB | JD | 7-29-13 |



NOTES: UNLESS OTHERWISE SPECIFIED

1. WORKMANSHIP SHALL BE IN ACCORDANCE WITH IPC-A-610.
2. ASSEMBLY PROCESS SHALL INCLUDE: REFLOW SOLDER TOP SIDE SMD. MAXIMUM SOLDER TEMPERATURE IS 240 DEGREES CELSIUS.
3. PARTS TO OMIT WILL BE SPECIFIED ON THE BILL OF MATERIALS. LOCATIONS OF OMITTED PARTS SHALL BE FREE OF SOLDER. MASK THE SOLDER STENCIL WHERE SMT PARTS ARE OMITTED.
4. INSTALL SHUNTS AS SHOWN ON ASSY DRAWING.
5. DEPANELIZE BOARDS AFTER ASSEMBLY AND ROUTE-OUT THE BREAKOUT TABS ON FOUR SIDES OF THE BOARD EDGE.
7. INSTALL TURRETS AND 4 STAND-OFFS AT FOUR CORNERS AS SHOWN BELOW:



UVLO SELECTION

| UV3 | UV2 | UV1 | UV0 | UVLO RISING | UVLO FALLING |
|-----|-----|-----|-----|-------------|--------------|
| 0 | 0 | 0 | 0 | 4V | 3V |
| 0 | 0 | 0 | 1 | 5V | 4V |
| 0 | 0 | 1 | 0 | 6V | 5V |
| 0 | 0 | 1 | 1 | 7V | 6V |
| 0 | 1 | 0 | 0 | 8V | 7V |
| 0 | 1 | 0 | 1 | 8V | 5V |
| 0 | 1 | 1 | 0 | 10V | 9V |
| 0 | 1 | 1 | 1 | 10V | 5V |
| 1 | 0 | 0 | 0 | 12V | 11V |
| 1 | 0 | 0 | 1 | 12V | 5V |
| 1 | 0 | 1 | 0 | 14V | 13V |
| 1 | 0 | 1 | 1 | 14V | 5V |
| 1 | 1 | 0 | 0 | 16V | 15V |
| 1 | 1 | 0 | 1 | 16V | 5V |
| 1 | 1 | 1 | 0 | 18V | 17V |
| 1 | 1 | 1 | 1 | 18V | 5V |

OUTPUT VOLTAGE SELECTION

| OUT2 | OUT1 | OUT0 | VOUT |
|------|------|------|------|
| 0 | 0 | 0 | 1.8V |
| 0 | 0 | 1 | 2.5V |
| 0 | 1 | 0 | 2.8V |
| 0 | 1 | 1 | 3.0V |
| 1 | 0 | 0 | 3.3V |
| 1 | 0 | 1 | 3.6V |
| 1 | 1 | 0 | 4.5V |
| 1 | 1 | 1 | 5.0V |

LDO VOLTAGE SELECTION

| LDO2 | LDO1 | LDO0 | LDO_OUT |
|------|------|------|---------|
| 0 | 0 | 0 | 1.2V |
| 0 | 0 | 1 | 1.5V |
| 0 | 1 | 0 | 1.8V |
| 0 | 1 | 1 | 2.0V |
| 1 | 0 | 0 | 2.5V |
| 1 | 0 | 1 | 3.0V |
| 1 | 1 | 0 | 3.3V |
| 1 | 1 | 1 | =LDO_IN |

ILIM SELECTION INSTALL

| IPK2 | IPK1 | IPK0 | ILIM |
|------|------|------|-------|
| R3 | R5 | R7 | 5mA |
| R3 | R5 | R6 | 10mA |
| R3 | R4 | R7 | 15mA |
| R3 | R4 | R6 | 25mA |
| R2 | R5 | R7 | 50mA |
| R2 | R5 | R6 | 100mA |
| R2 | R4 | R7 | 150mA |
| R2 | R4 | R6 | 250mA |

APPROVALS

| | |
|----------|----|
| PCB DES. | NC |
| APP ENG. | JD |



1630 MCCARTHY BLVD
 MILPITAS, CA 95035
 PH: (408)432-1900
 www.linear.com
 LTC CONFIDENTIAL -
 FOR CUSTOMER USE ONLY

TITLE: TOP ASSEMBLY DRAWING:
 NANOPOWER BUCK-BOOST DC/DC WITH
 ENERGY HARVESTING BATTERY LIFE EXTENDER

| SIZE | IC NO. | REV. |
|------|----------------------------------|------|
| N/A | LTC3330EUH DEMO CIRCUIT 2048A | 3 |

SCALE = NONE

FILENAME: DC2048A-3.PCB

SHT 1 of 2